

Fast Portable Quantitative PCR Instrument

ForeQuant SF



8 °C/s



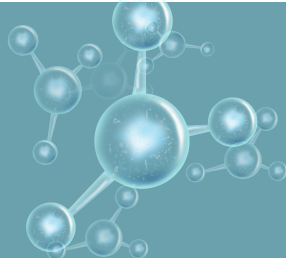
30 min



Compact Body | Comprehensive skill

Super fast | Light portable | Ultra-easy operation

Focused on life science, make experiment faster and easier



◆ Product Introduction

Real-time fluorescence quantitative PCR is more and more widely used as an important technology in scientific research and molecular diagnosis. In order to meet the needs of fast, timely detection and small flux scientific research and teaching, Foregene introduced **ultra-fast portable** fluorescent quantitative PCR instrument system ForeQuant SF. The system uses **innovative liquid circulation refrigeration** combined with the Peltier temperature control technology, simple operation software, lightweight and compact body, can be free from site constraints, quick and accurate completion of quantitative PCR-related applications.



◆ Product Features

Ultra-fast

Ultra-fast temperature rise and cool down within **30 minutes** to complete all experimental tests, to ensure the quick scene results.

Portable

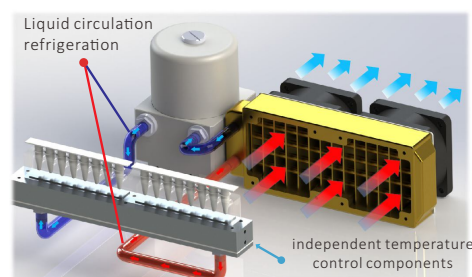
Portable and compact, Fully meet the disease control, customs, commodity inspection, food safety, environmental protection and other timely **on-site testing** needs

Precise

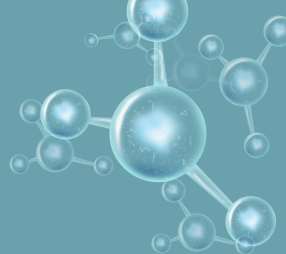
Precise temperature, Control and inspection technology with **the same performance** as the desktop qPCR instrument, to ensure the reliability of experimental results.

◆ Technical Superiority

Fast access to test results on-site timely detection of important application needs, in order to meet such practical needs, ForeQuant SF use special innovative liquid circulation refrigeration, combined with unique Peltier temperature control technology, in order to ensure all the even and accurate temperature control performance at the same time, to achieve **ultra-fast temperature change**, the maximum control temperature rate is up to 8 °C/second. After repeated testing, in the same experimental protocol and operation conditions, compared to the market (generic 96-tube) quantitative PCR, the time taken for the experiment can be **reduced by half**.

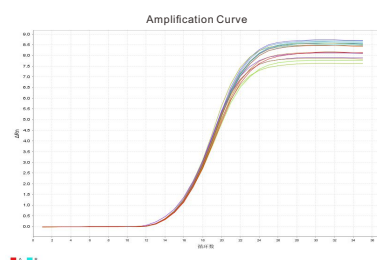


innovative liquid circulation refrigeration
combined with temperature control technology

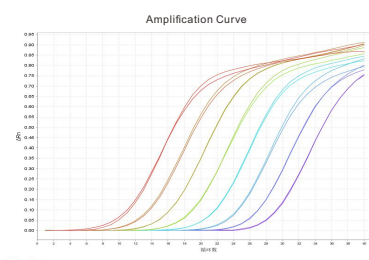


SUPER FAST REAL TIME PCR SYSTEM

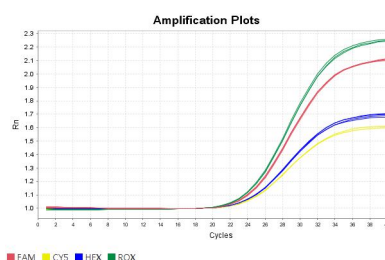
◆ Outstanding Performance



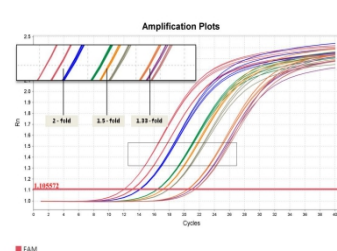
High Repeatability



High Sensitivity



Multiple Detection



High Resolution

◆ Technical Specifications

Temperature control		Optical inspection	
Sample capacity	2x8 wells(0.2ml single tube,8 strip tube)	Excitation light source	Monochromatic high-efficiency LED
Reaction volume	10-50 ul	Detection Systems	High sensitivity MPCC
Thermal cycle technology	Peltier	Detection mode	Ultra-fast hole-by-hole scanning
Cooling mode	Liquid circulation refrigeration	Fluorescent channels	ForeQuant SF2: Standard two channels(FAM/VIC), ForeQuant SF4: optional four channels(FAM/VIC/ROX/CY5)
Maximum heating and cooling rate	8 °C per second	Detection time	< 30 mins (combined with FOREGENE fast kit)
Temperature accuracy	±0.2°C	Sensitivity	With single-copy gene, can distinguish 1.33-fold copy number difference in single-plex reaction
Temperature uniformity	±0.2°C@60°C ±0.2°C@90°C	Dynamic Range	10 magnitudes
Hardware and other parameters			
Noise	<50dB	Size	205x190x98mm(LxWxH)
Power supply	AC220V, 50Hz, 2.5A	Software systems	Windws
Software Functions			
Amplification curves, absolute quantitative, qualitative analysis, dissolved curves			



The Series of Foregene PCR Amplifier is named "SUI"
who is the inventor of fire in Chinese ancient time. The invention of the fire is a important mark in Chinese ancient culture
history. "SUI" Series instrumrnts mean "exploration and discovery, decryption of the unknown, penetration of darkness"



Foregene Co., Ltd.

Product ordering Hotline: +86-28-86050301

ADD: Building D2, block A, Tri-medical innovation center, No. 18,
North Bayi Road, Wenjiang, Chengdu, Sichuan, P.R. china

E-mail: overseas@foregene.com

Website: www.foreivd.com